



East State Street



**ROADWAY RECONSTRUCTION,
MODERNIZATION AND STREETSCLAPING**

CITY OF GENEVA



Project Overview



PROJECT ORIGINS

SCOPE OF IMPROVEMENTS

FUNDING

TIMELINE MOVING FORWARD



project origins

streetscape only

2004 East State Street
design standards guide

EAST STATE STREET DESIGN STANDARDS GUIDE



Produced for
City of Geneva, Planning Department

By
Land Design Collaborative, Inc.

September, 2004

September, 2004

PROJECT ORIGINS – *Streetscaping*

VISUAL INVENTORY AND ANALYSIS



Fig 1.1 Visual Analysis and Character Zones

- Legend**
- Views to landmarks
 - Panoramic views
 - Views with open views
 - Views with semi-open views
 - Views with contained views
 - No sidewalk
 - Areas of trees/woodland
 - Narrow Right-of-Way
 - Areas of High Visual Quality
 - Focal Areas
 - Safety/Right of Way Issues
 - Lack of Safe Pedestrian Crossing
 - Traffic Issues

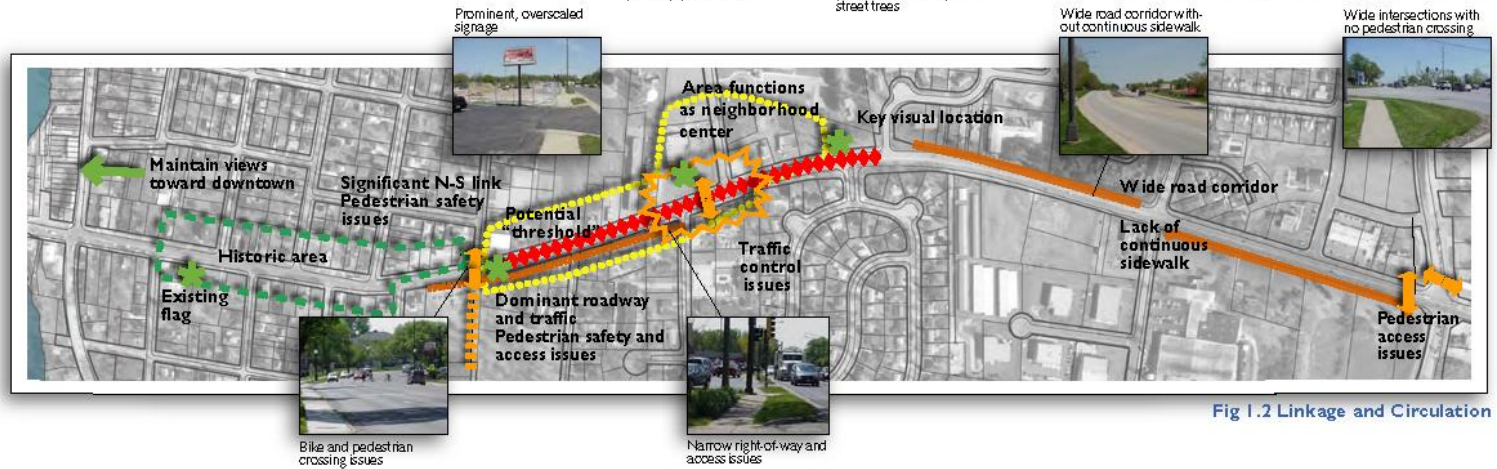


Fig 1.2 Linkage and Circulation

THREE PRIMARY CHARACTER ZONES

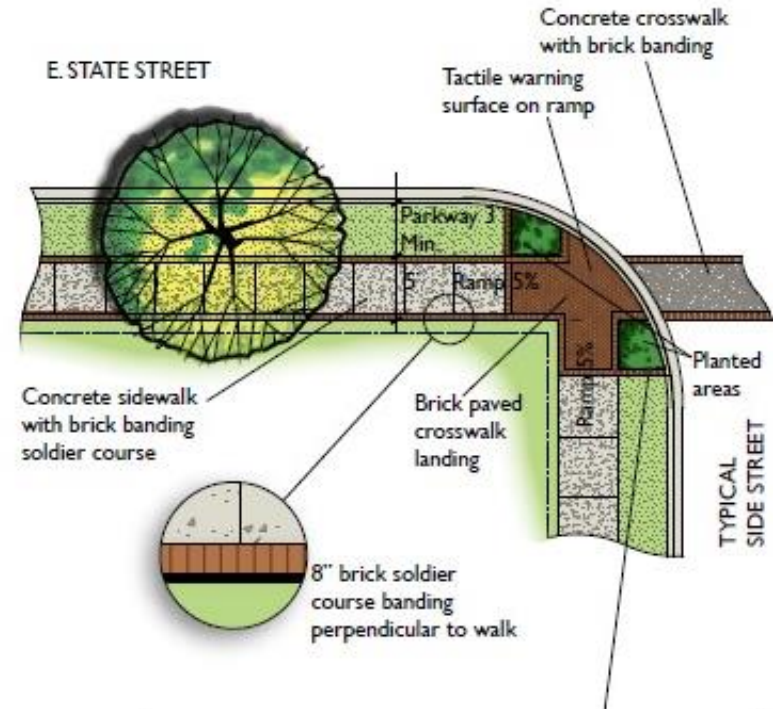
historic area

neighborhood center

east gateway area



Historic Character Area Prototype



HISTORIC AREA

- *concrete sidewalks, brick banding*
- *fill sidewalk gaps*
- *match existing tree and shrub characteristics*
- *potential traffic signal at Harrison Street*



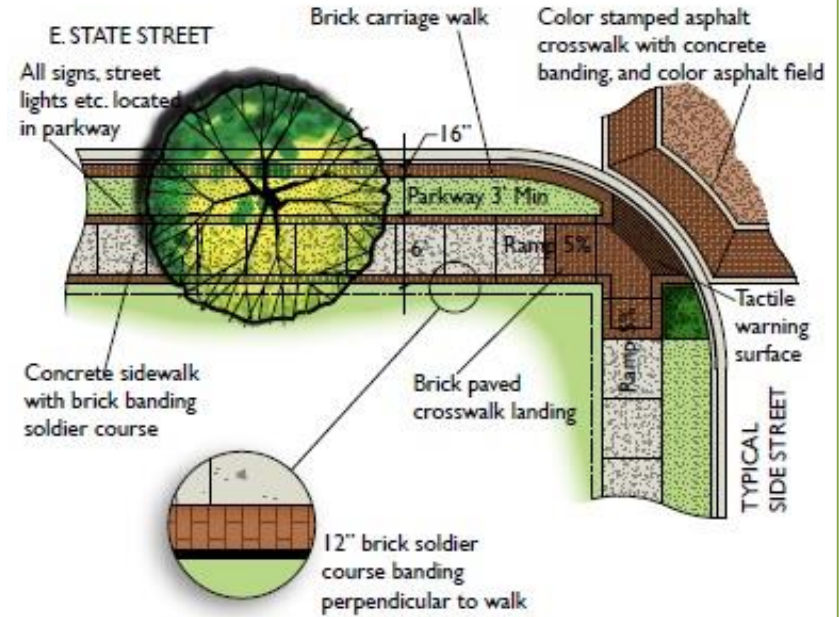
Intersections provide special opportunities for perennial and annual flower beds. Locations as indicated will be developed for these special plantings in subsequent improvement phases

Prominent, oversized signage

016

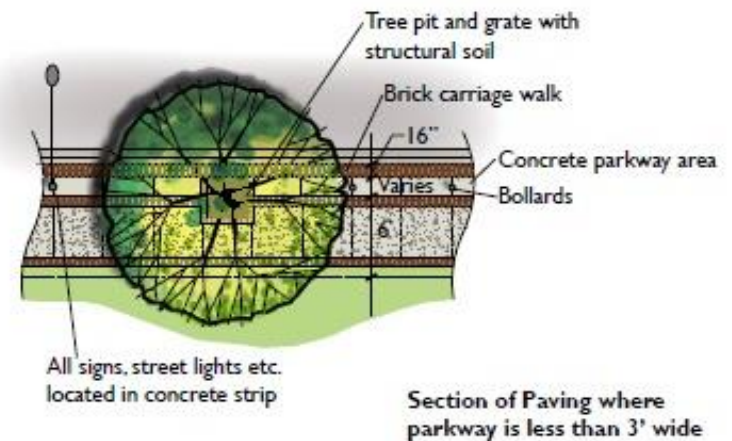


Neighborhood Center Character Area Prototype



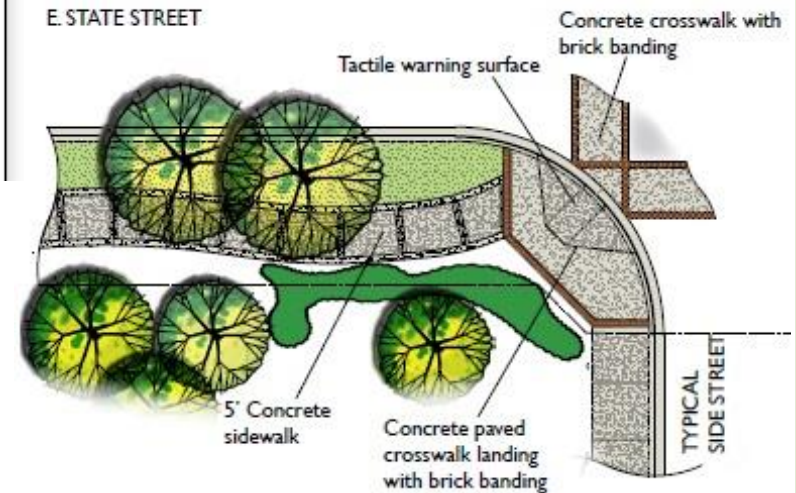
NEIGHBORHOOD CENTER

- *concrete sidewalks, carriage walks*
- *fill sidewalk gaps*
- *signal upgrade at East Side Drive*
- *colored intersection centers*





East Gateway Character Area Prototype



EAST GATEWAY AREA

- *concrete sidewalks – no banding*
- *fill sidewalk gaps – possible bike path*
- *match existing tree and shrub characteristics*
- *extend to Kirk Road*
- *key visual entrance signage*

Only one problem...



**Illinois Department
of Transportation**



Illinois Department of Transportation



“DO WHAT YOU WANT, BUT...”

reconstruction

⇒ improvements
would be
impacted

**possible corridor
deficiencies**

⇒ *intersections*
⇒ *drainage*
⇒ *lighting*
⇒ *right-of-way*

**federal or state
funding**

⇒ not without
Phase I study

at your own risk

Project Timeline



2005

- commencement of Phase I engineering

2010

- Phase I approval - *\$14 million (construction only)*

Phase I Findings



- **Bennett and East State Street intersections**
 - *under capacity*
 - *need additional lanes*
- **East Side Drive to Bennett Street**
 - *center bi-directional turn lane required for safety*
- **drainage system (stormwater)**
 - *undersized*
 - *requires full replacement*
- **significant right-of-way needs**
 - *1.25 acres of permanent right-of-way*
 - *0.10 acres of permanent easement*
 - *2.35 acres of temporary easement*
 - **76 total parcels require land acquisition**

Project Timeline



2005

- commencement of Phase I engineering

2010

- Phase I approval

2010-2012

- *project idle*
- *City staff turnover: Tom Talsma, Jason Elias, Dan Dinges, Chris Bong, Pam Broviak*

Project Timeline



2005

- commencement of Phase I engineering

2010

- Phase I approval

2010-2012

- *project idle*

2012

- BLA hired for Phase II engineering (QBS process)

Phase II Engineering Goals



develop biddable engineering plans

reduce land acquisition

“value engineering” on Phase I study

funding

how do we pay for all this???



Project Timeline



2005

- commencement of Phase I engineering

2010

- Phase I approval

2010-2012

- *project idle*

2012

- BLA hired for Phase II engineering

2013

- Illinois Transportation Enhancement Program (ITEP) grant - \$1.2 million
- *streetscape, pedestrian connectivity, bike paths, lighting upgrades*

Project Timeline



2005

- commencement of Phase I engineering

2010

- Phase I approval

2010-2012

- *project idle*

2012

- BLA hired for Phase II engineering

2013

- IDOT - “no money”
- *Geneva should continue pursuing additional funding*

Project Timeline



2005

- commencement of Phase I engineering

2010

- Phase I approval

2010-2012

- *project idle*

2012

- BLA hired for Phase II engineering

2013

- ITEP grant - \$1.2 million
- IDOT - “no money”

2014

- Kane/Kendall Council of Mayors and Managers STP grant - \$2.5 million

Project Timeline



2005

- commencement of Phase I engineering

2010

- Phase I approval

2010-2012

- *project idle*

2012

- BLA hired for Phase II engineering

2013

- ITEP grant - \$1.2 million
- IDOT - “no money”

2014

- back to IDOT - still “no money”
- IDOT agrees to prepare **DOCUMENTS** for land acquisition

Project Timeline



2005

- commencement of Phase I engineering

2010

- Phase I approval

2010-2012

- *project idle*

2012

- BLA hired for Phase II engineering

2013

- ITEP grant - \$1.2 million
- IDOT - “no money”

2014

- KKCOM STP grant - \$2.5 million
- back to IDOT - still “no money”

2015

- CMAP - \$4.5 million in grants (CMAQ)
- *funds roadway widening, traffic signals, bike path*

Project Timeline



2005

- commencement of Phase I engineering

2010

- Phase I approval

2010-2012

- *project idle*

2012

- BLA hired for Phase II engineering

2013

- ITEP grant - \$1.2 million
- IDOT - “no money”

2014

- KKCOM STP grant - \$2.5 million
- back to IDOT - still “no money”

2015

- KKCOM reapplication - additional STP
- #2 project scoring - **no additional funding** - shortfall

Project Timeline



2005

- commencement of Phase I engineering

2010

- Phase I approval

2010-2012

- *project idle*

PROJECT FUNDED!!!

2013

- ITEP grant - \$1.2 million
- IDOT - “no money”

2014

- KKCOM STP grant - \$2.5 million
- back to IDOT - still “no money”

2015

- \$4.5 million in grants (CMAQ)
- KKCOM no additional funding

2016

- IDOT agrees to \$6.5 million in funding

Only one problem...



**Illinois Department
of Transportation**

“NO MONEY FOR LAND ACQUISITION”

estimated at \$5 million

Phase II Engineering Goals



develop biddable engineering plans

REDUCE LAND ACQUISITION

“VALUE ENGINEERING” ON PHASE I STUDY

Land Acquisition



Phase I Right-of-Way

- 1.25 acres of permanent right-of-way
- 0.10 acres of permanent easement
- 2.35 acres of temporary easement
- **76 parcels affected**

Phase II Right-of-Way

- 0.63 acres of permanent right-of-way
 - **50% reduction**
- 0.00 acres of permanent easement
 - **100% reduction**
- 0.90 acres of temporary easement
 - **261% reduction**
- **~50 parcels affected**
 - **35% reduction**

Back to CMAP...



2018

• CMAQ funding change request

- ✓ \$3 million in requested funding for right-of-way
- ✓ State Senator McConnaughay - support letter
- ✓ State Representative Andersson - support letter

APPROVED

ILLINOIS STATE SENATE

1

DISTRICT OFFICE
130 WASHINGTON STREET
WEST DUNDEE, IL 60118
847.214.8245
SENATOR@KARENMCCONNAUGHAY.COM



KAREN MCCONNAUGHAY
STATE SENATOR • 33RD DISTRICT

SPRINGFIELD OFFICE
103D CAPITOL BUILDING
SPRINGFIELD, ILLINOIS 62706
217.782.1977
217.782.4079 FAX

March 29, 2018

Mr. Joseph C. Szabo
Executive Director
Chicago Metropolitan Agency for Planning
233 South Wacker Drive, Suite 800
Chicago, Illinois 60606

Dear Mr. Szabo,

District Office:
127 S. 1st Street, Suite 204
Geneva, Illinois 60134
630.457.5460

Springfield Office:
211-N Stratton Building
Springfield, Illinois 62706
217.782.5457



Steven A. Andersson
STATE REPRESENTATIVE • 65TH DISTRICT

Committees: **1**

- Appropriations - General Services
- Cities & Villages
- Judiciary - Civil
- Museums, Arts & Cultural Enhancements
- Renewable Energy & Sustainability
- Small Business Empowerment & Workforce Development
- Transportation: Regulation, Roads & Bridges

March 29, 2018

Mr. Joseph C. Szabo, Executive Director
Chicago Metropolitan Agency for Planning
233 South Wacker Drive, Suite 800
Chicago, Illinois 60606

Dear Mr. Szabo,



WHAT IS THIS PROJECT?

**upgraded
signal and
ADA ramps,
decorative**

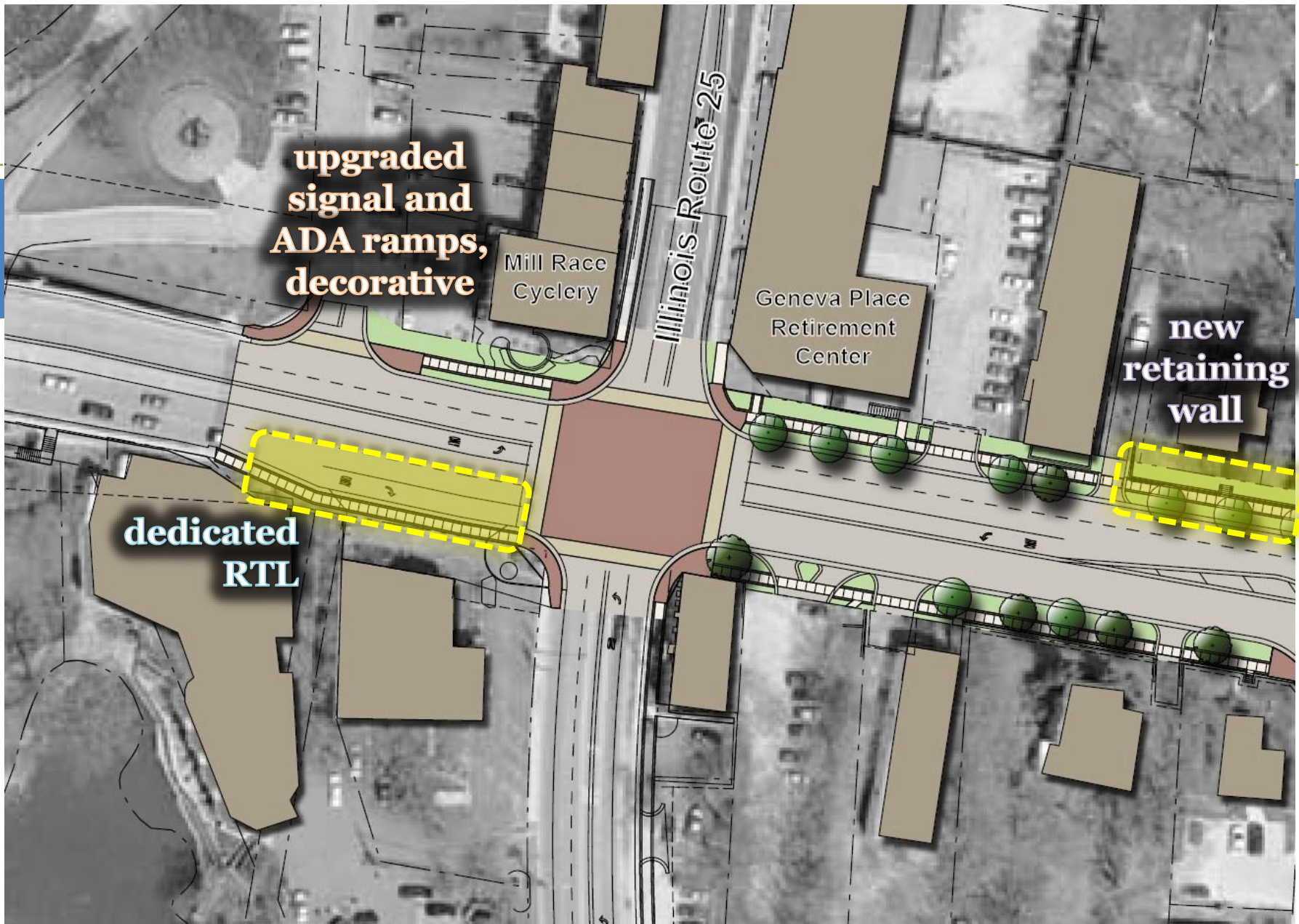
Mill Race
Cyclery

Illinois Route 25

Geneva Place
Retirement
Center

**new
retaining
wall**

**dedicated
RTL**



CENTER BI-DIRECTIONAL TURN LANE

Bennett Street to East Side Drive



CONCRETE PAVEMENT ROADWAY (ALL OF EAST STATE STREET)

STAMPED CONCRETE EDGING PER 2004 DESIGN GUIDE

FILL ALL SIDEWALK GAPS, ADA RAMP UPGRADES

CENTER BI-DIRECTIONAL TURN LANE

Bennett Street to East Side Drive



NO SIGNAL AT HARRISON STREET

STAMPED CONCRETE EDGING PER 2004 DESIGN GUIDE

FILL ALL SIDEWALK GAPS, ADA RAMP UPGRADES



REMOVE SUPERELEVATED CURVE

NEW BIKE PATH FROM EAST SIDE DRIVE TO KIRK ROAD

FILL ALL SIDEWALK GAPS, ADA RAMP UPGRADES



NEW BIKE PATH FROM EAST SIDE DRIVE TO KIRK ROAD

FILL ALL SIDEWALK GAPS, ADA RAMP UPGRADES

What else is included?



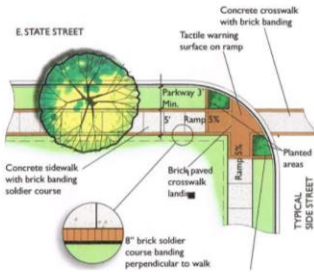
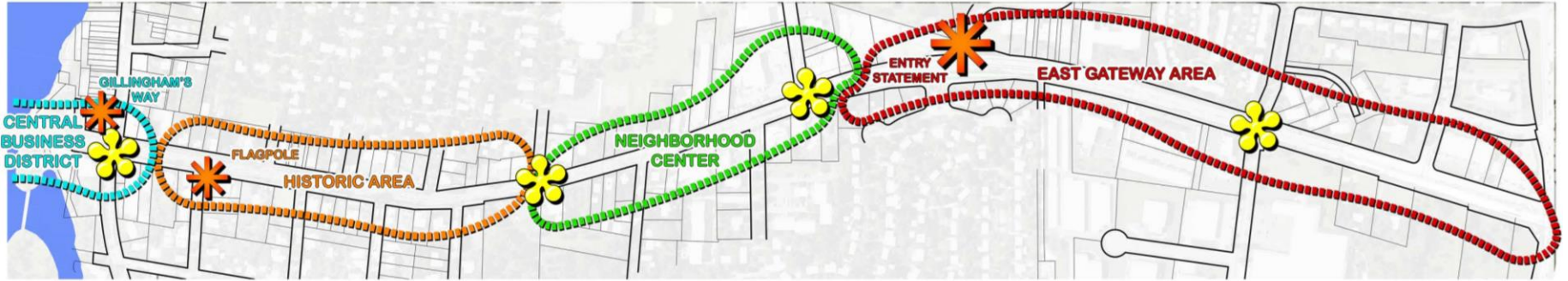
new 12-inch watermain and all services

replace 15-inch sanitary sewer and all services

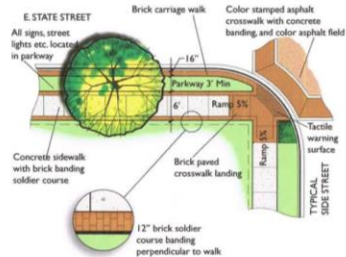
upgraded signals and emergency preemption

all new storm sewer system, increased capacity

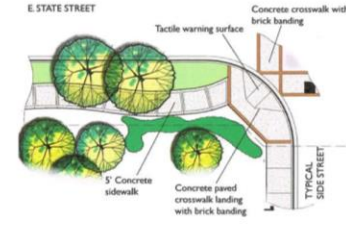
**new roadway lighting and streetscaping
(*AMES Engineering and The Lannert Group*)**



INITIAL HISTORIC CHARACTER
SCALE: TBD



INITIAL NEIGHBORHOOD CHARACTER
SCALE: TBD

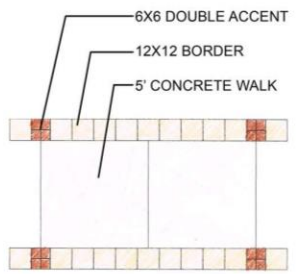
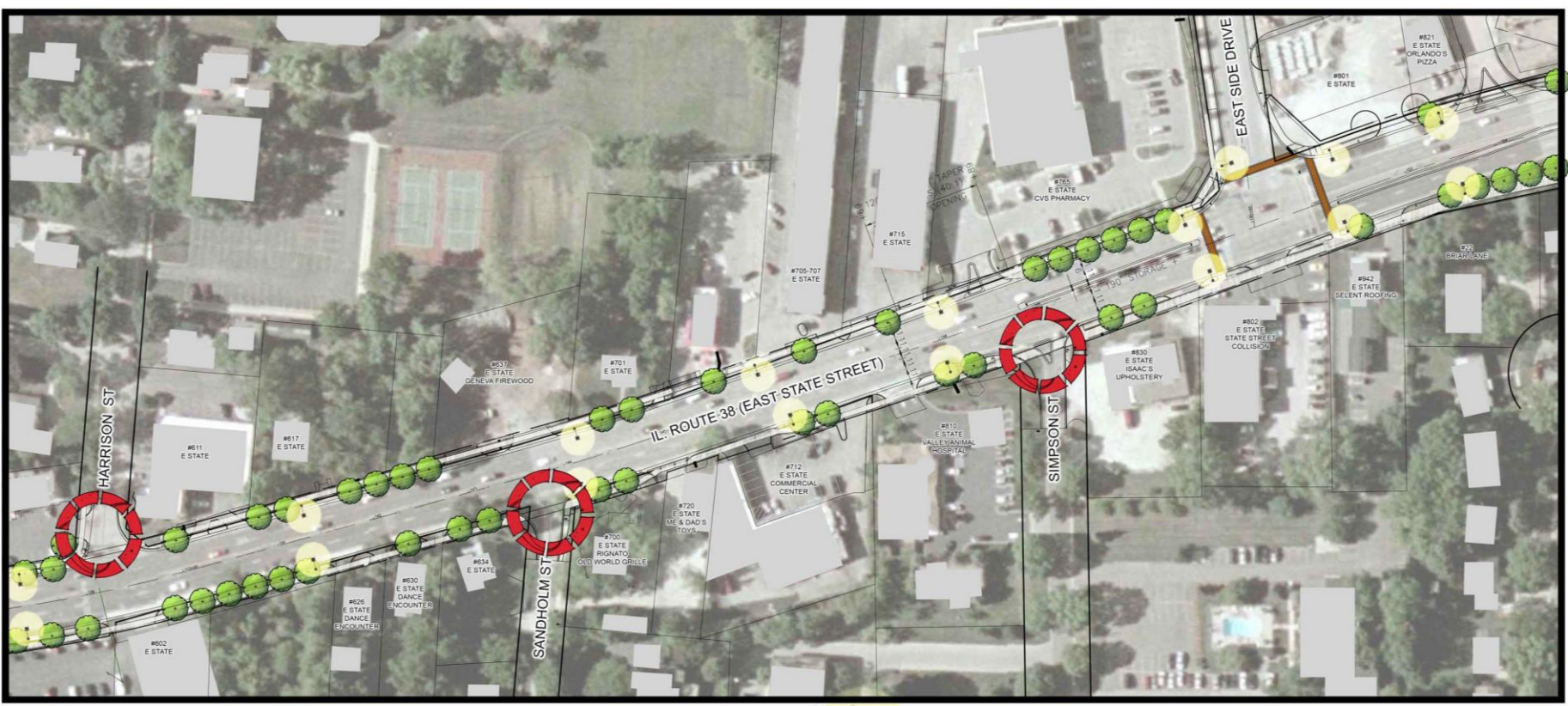


INITIAL EAST GATEWAY CHARACTER
SCALE: TBD

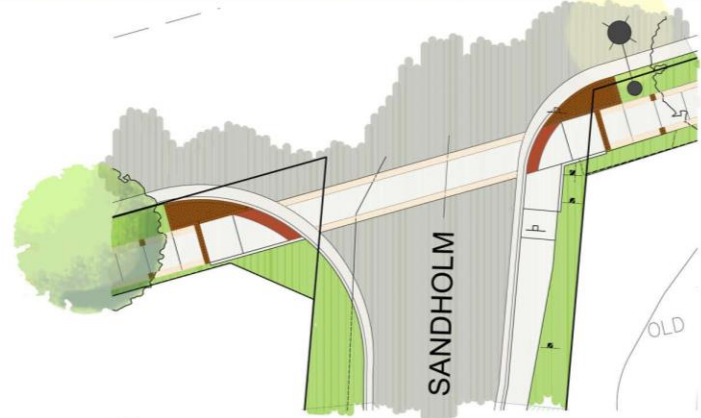




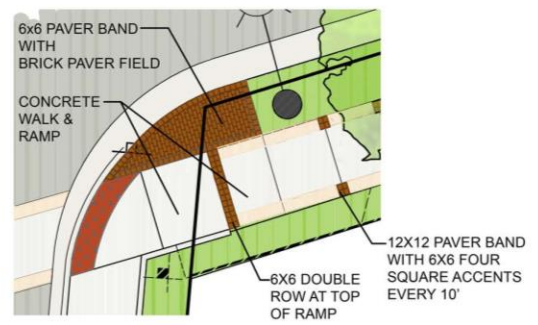

EAST GATEWAY ENTRANCE FEATURE
 SCALE: TBD



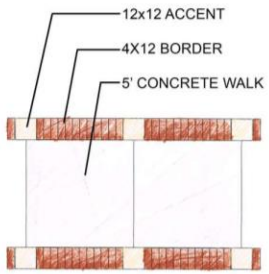
PAVER OPTION
12'x12' ROW WITH 6'x6' FOURSQUARE ACCENTS



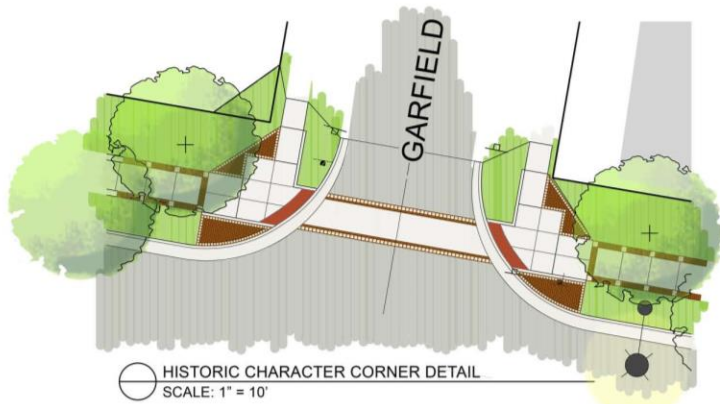
NEIGHBORHOOD CHARACTER CORNER DETAIL
SCALE: 1" = 10'



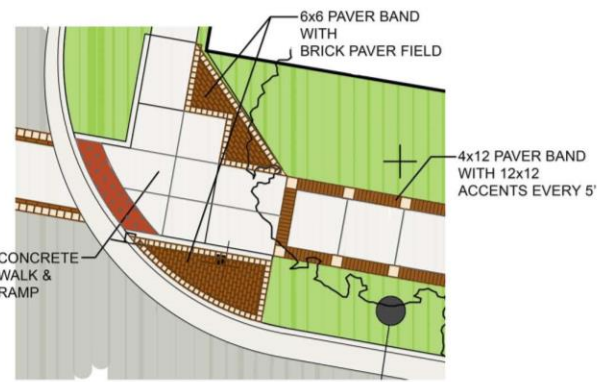
CORNER PAVER DETAIL
SCALE: 1" = 5'



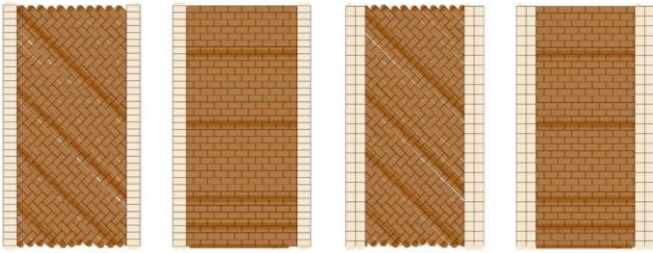
PAVER OPTION
4"x12" BAND WITH 12"x12" ACCENTS



HISTORIC CHARACTER CORNER DETAIL
SCALE: 1" = 10'



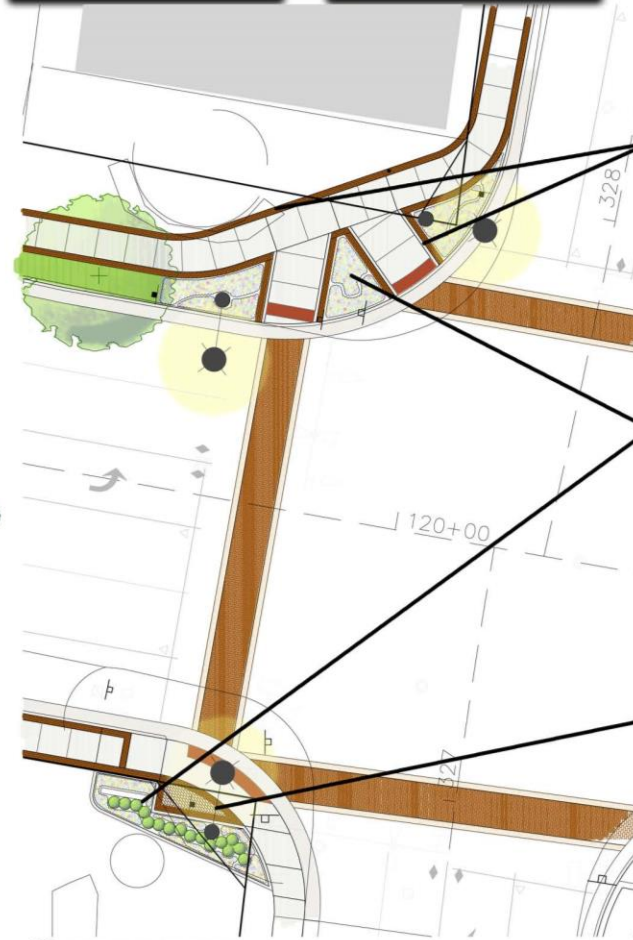
CORNER PAVER DETAIL
SCALE: 1" = 5'



STAMPED ASPHALT PATTERN OPTIONS



CBD EXTENSION AREA
SCALE: 1" = 50'-0"



CBD CORNER DETAIL
SCALE: 1" = 10'-0"

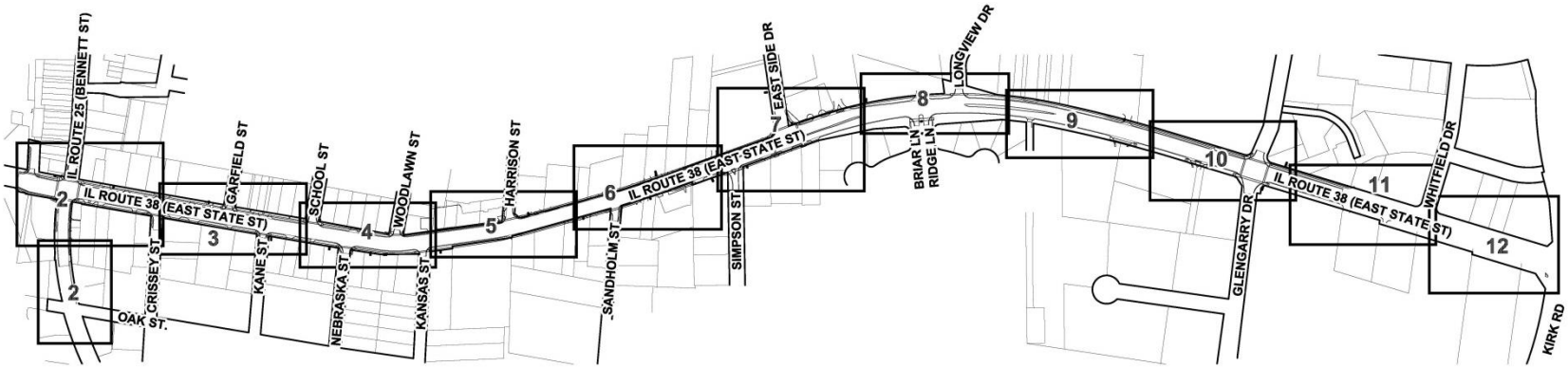


STREETSCAPE PLANS FOR EAST STATE STREET HIGHWAY RECONSTRUCTION

PREPARED FOR:
CITY OF GENEVA

1800 SOUTH STREET
GENEVA, ILLINOIS

DATE



SHEET INDEX

1. TITLE SHEET
2. STREETSCAPE PLAN
3. STREETSCAPE PLAN
4. STREETSCAPE PLAN
5. STREETSCAPE PLAN
6. STREETSCAPE PLAN
7. STREETSCAPE PLAN
8. STREETSCAPE PLAN
9. STREETSCAPE PLAN
10. STREETSCAPE PLAN
11. STREETSCAPE PLAN
12. STREETSCAPE PLAN
13. FEATURE AREA PLANS
14. LANDSCAPE DETAILS

CONSULTANTS

LANDSCAPE ARCHITECT



Lannert Group
Landscape Architecture • Planning • Community Consulting
© The Lannert Group, Inc.
630.258.8000
Fax: (630) 258.8000
http://www.lannert.com
14 N. LaSalle Street
Geneva, Illinois 60134

CIVIL ENGINEER

BOLLINGER, LACH & ASSOCIATES, INC.
333 PIERCE ROAD, SUITE 200
ITASCA, ILLINOIS 60143
(630) 438-6400
(630) 438-6444 (fax)

LEGEND

- SIDE STREET CROSSWALK
PAVER BORDER DETAIL
SEE DETAIL 074
- CENTRAL BUSINESS DISTRICT EXTENSION (CBDE)
SIDEWALK PAVES BORDER
SEE DETAIL 074
- HISTORIC CHARACTER DISTRICT (HCD)
SIDEWALK PAVES BORDER
SEE DETAIL 074
- NEIGHBORHOOD CHARACTER DISTRICT (NCD)
SIDEWALK PAVES BORDER
SEE DETAIL 074

LANDSCAPE ARCHITECT'S CERTIFICATE
STATE OF ILLINOIS)
COUNTY OF KANE) SS

This is to certify that the final landscape architectural plan for the East State Street Highway Reconstruction located from the Fox River bridge eastward to Kirk Road in Geneva, Illinois was designed and prepared by an Illinois Registered Landscape Architect.

The Lannert Group, Inc.



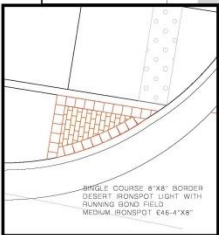
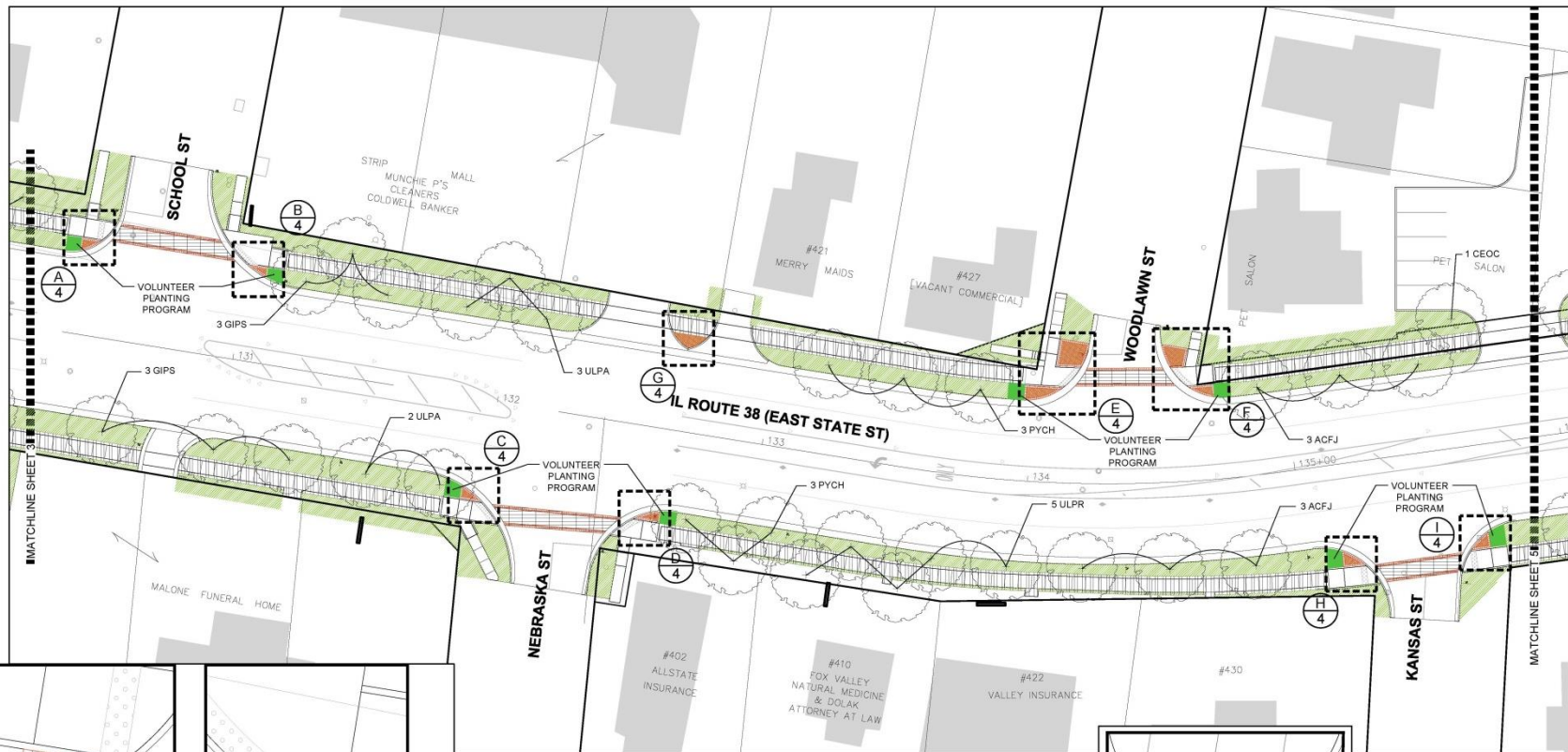
WARNING
CALL BEFORE
YOU DIG
800-862-9123

NOTE:
THE LANDSCAPE ARCHITECT AND HIS/HER CONSULTANTS DO NOT WARRANT OR GUARANTEE THE ACCURACY AND COMPLETENESS OF THE WORK PRODUCT THEREIN BEYOND A REASONABLE DILIGENCE. IF ANY MISTAKES, OMISSIONS, OR DISCREPANCIES ARE FOUND TO EXIST WITHIN THE WORK PRODUCT, THE LANDSCAPE ARCHITECT SHALL BE PROMPTLY NOTIFIED SO THAT HE/SHE MAY HAVE THE OPPORTUNITY TO TAKE ANY STEPS NECESSARY TO RESOLVE THEM. FAILURE TO PROMPTLY NOTIFY THE LANDSCAPE ARCHITECT OF SUCH CONDITIONS SHALL ASSUME THE LANDSCAPE ARCHITECT FROM ANY RESPONSIBILITY FOR THE CONSEQUENCES OF SUCH FAILURE. ACTIONS TAKEN WITHOUT THE KNOWLEDGE AND CONSENT OF THE LANDSCAPE ARCHITECT, OR IN CONTRADICTION TO THE LANDSCAPE ARCHITECT'S WORK PRODUCT OR RECOMMENDATIONS, SHALL BECOME THE RESPONSIBILITY NOT OF THE LANDSCAPE ARCHITECT BUT OF THE PARTIES RESPONSIBLE FOR THE TAKING OF SUCH ACTION.

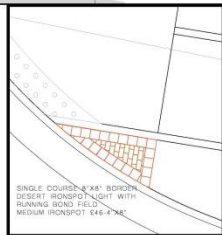
REVISION	DATE	SHEET NUMBER	OWNER

FOR REVIEW - NOT FOR CONSTRUCTION

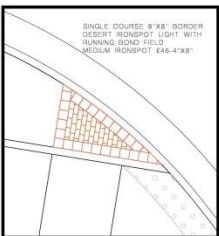
1409 - EAST STATE STREET



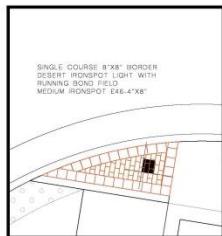
A PAVEN INLAY DETAIL
SCALE: 1/4" = 1'-0"



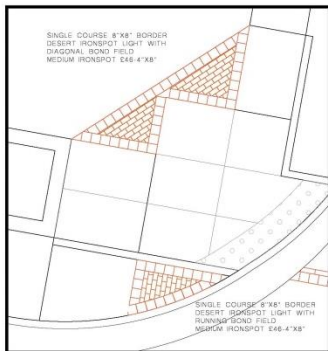
B PAVEN INLAY DETAIL
SCALE: 1/4" = 1'-0"



C PAVEN INLAY DETAIL
SCALE: 1/4" = 1'-0"



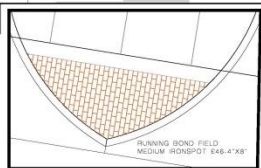
D PAVEN INLAY DETAIL
SCALE: 1/4" = 1'-0"



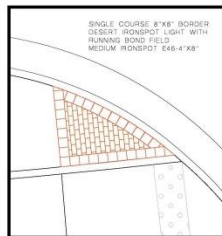
E PAVEN INLAY DETAIL
SCALE: 1/4" = 1'-0"



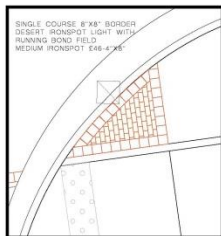
F PAVEN INLAY DETAIL
SCALE: 1/4" = 1'-0"



G PAVEN INLAY DETAIL
SCALE: 1/4" = 1'-0"



H PAVEN INLAY DETAIL
SCALE: 1/4" = 1'-0"



I PAVEN INLAY DETAIL
SCALE: 1/4" = 1'-0"

As of today...



CONSTRUCTION

RIGHT-OF-WAY

PHASE
III

\$16.1 million

\$3 million

\$1.5
million

*Federal
Grant*
\$8
million

IDOT
\$6.5
million

Geneva
\$1.6
million

*Federal
Grant*
\$2.4
million

Geneva
\$0.6
million

Geneva
\$1.5
million

Anticipated Project Schedule

2019

IDOT pursuing
land acquisition

2021

tentative project
construction
start

utility relocation
and pre-stage
operations

2021-2022

roadway
reconstruction